

Product datasheet



A0721700

M2-PRO OPT TIMBER + CERAK TUNGSTEN 12GA/28" SHORT TUBE EUR

General information

Gauge/Caliber:	12	Weight (Kg) (± 100g):	3.20000000000000000000
Recoil pad:	Soft Poliyurethane	Stock:	Hunting Pistol with Progressive comfort system
Stock and Forend Finish:	Camo Gore Optifade Timber Techno-polymer	Checkering:	Air Touch
Comb:	Combtech	Drop at comb:	42
Drop at heel:	45,50, 55,60 (C mounted), 65	L.O.P.:	365
Barrel Lenght:	70/28	Packaging:	Cardboard box: drop and cast change kit, kit of chokes and wrench, sling swivel kit, oil bottle, warranty and safty rules book.
Barrel Finish:	Tungsten Cerakote	Trigger pull:	2.500

Semiauto Details

Chamber:	76 mm - 3"	Cast:	LH/RH
Receiver:	Tungsten Cerakote Aluminum alloy	Grooved Receiver:	
Bolt:	Steel Blued matte	Magazine:	3 (70/76)
Rail Configuration:	-	Bore (mm):	
Rib:	Ventilated Steel Step	Number of Chokes:	5
Chokes:	INTERNAL 70 mmF (*); IM (**); M (***) (***); IC (****); CYL (*****)	Sight:	Short fluorescent red

Product correlations

90002800
CARRIER LATCH PIN

90003100
EXTRACTOR PIN

	90003200 BUTTON PIN		90004800 ELASTIC WASHER
	90006000 STOCK RETAINING NUT		90008800 TRIGGER PIN
	90010200 WASHER		90021600 BOLT HANDLE SPRING RETAINING PIN
	90030500 SCREW		90031700 SCREW
	F0004500 FIRING PIN RETAINING PIN		F0038501 SLING SWIVEL KIT
	F0106601 CRIO INTERNAL CHOKE (*) 12GA		F0106701 CRIO INTERNAL CHOKE (**) 12GA
	F0106801 CRIO INTERNAL CHOKE (***) 12GA		F0107001 CRIO INTERNAL CHOKE (*****) 12GA
	F0312701 INTERNAL CHOKE WRENCH ASSEMBLY		F0350000 PROGRESSIVE COMFORT HOUSING 828U
	F0512500 CARRIER LATCH ASSBY MONTEFELTRO 2022		F0512600 CARRIER LATCH ASSBY MONTEFELTRO 2022
	F0559700 SYNT FORE-END ASSBY M2 2023 12GA OPT TIMBER		G0000100 HAMMER SPRING CAP
	G0003900 BOLT STOP TOOTH PIN		G0004000 DISCONNECTOR HAMMER PIN
	G0004301 BOLT LATCH PIN RBH		G0004902 EJECTOR
	G0007301 FIRING PIN RBH SHOTGUNS		G0007500 BOLT HANDLE PIN
	G0008600 LUG STOP RING		G0008900 MAGAZINE SPRING SEAL RING
	G0009203		G0020900

BUSH M1/SBE

FLUORESCENT FRONT SIGHT



G0032001

SAFETY SPRING SHOTGUN TR

G0032800

CARTRIDGE DROP LEVER SPRING

G0054200

HAND SAFETY PLUNGER

G0089101

DISCONNECTOR PIN M4S90

G0092200

ELASTIC WASHER

G0092400

RETAINING RING

G0124000

CLIP BUTTON SPRING

G0124401

CARRIER M4

G0126800

BOLT HANDLE RETAINING SPRING

G0128100

EJECTOR PIN SPRING M4

G0128500

DISCONNECTOR SPRING

G0187600

STOCK LOCKING PLATE, DROP 45/60
R.H./L.H. (STEEL)

G0218200

HAMMER SPRING



G0032300

TRIGGER GUARD PIN SPRING

G0032901

INERTIA SPRING

G0079100

LINK RAFF/MONTEFELTRO

G0089900

TRIGGER PIN BUSH

G0092300

WASHER

G0122800

CAP RETAINING PIN

G0124200

CARRIER SPRING

G0126200

CARRIER LATCH SPRING

G0126900

EXTRACTOR SPRING M4

G0128200

SPRING FOR CAP RETAINING BALL

G0187500

STOCK LOCKING PLATE, DROP 50/55
R.H./L.H. (STEEL)

G0216600

TRIGGER GUARD PIN M2

G0231202

MAGAZINE FOLLOWER M2/SBE II



G0244200
PISTON PLUNGER-PIN SEEGER



G0257700
LINK PIN MONT/RAFF 20



G0263602
BOX FOR M3/M4/S.NOVA PG



G0451400
FRONT SIGHT FIN-LPA



G0583700
TRIGGER LEVER SPRING RAFFAELLO



G0680900
SBE3 SAFETY BUTTON



G0857100
BOLT STOP TOOTH M2 SPEED



G0875600
Magazine Spring SBE3 3" 12g



G0880100
CAST CHANGE SHIM 3MM MONT-22



G0880200
DROP SHIM Z (45) MONT-22



G0880300
DROP SHIM A (50) MONT-22



G0880400
DROP SHIM B (55) MONT-22



G0880500
DROP SHIM C (60) MONT-22



G0881600
SYNT TRIGGER GUARD MONTEFELTRO 22



G0882100
FIRING PIN SPRING MONTEFELTRO 22



G0922900
LOCKING HEAD CAM PIN NICKEL UNIF



G0937700
TRIGGER BLUED MONTEFELTRO 20GA



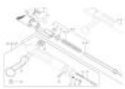
G0937801
BOLT HANDLE (BLUED) M2 2023



G1021700
PERNO GUIDA MOLLA ESPULSORE
NICHELATO MONT-22



G1021800
CORPO ESPULSORE NICHELATO MONT-22



MT_B7AE
M2-PRO (2023) CERAKOTE TUNGSTEN H-
237 + CAMO OPTIF. TIMBER